



The One-ga-low

a taxonomy of 530 sq.ft.



materials:

**natural /
reclaimed**

doors: sliding

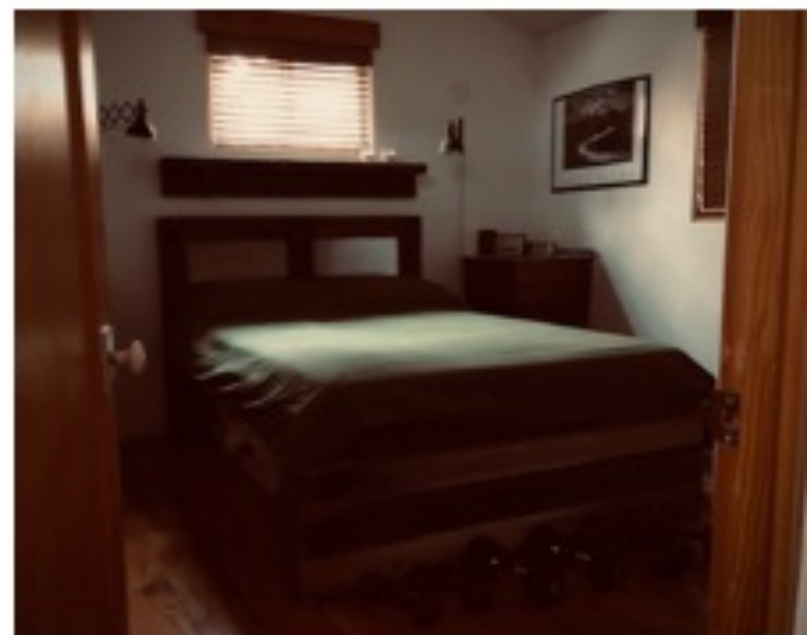




living / reading



cooking / building



sleeping / exercising



rooms

"jungle"//graceland.elvis

The background is a dark brown, textured surface. Overlaid on this are several sets of parallel lines in different colors: light blue, yellow, orange, and light green. These lines are arranged in a way that suggests a circuit board or a network of paths, with some lines entering from the left and others exiting towards the right, creating a sense of flow and connectivity.

back to seaside...



re-uses:
adaptive





**gear &
packs:** ready to go

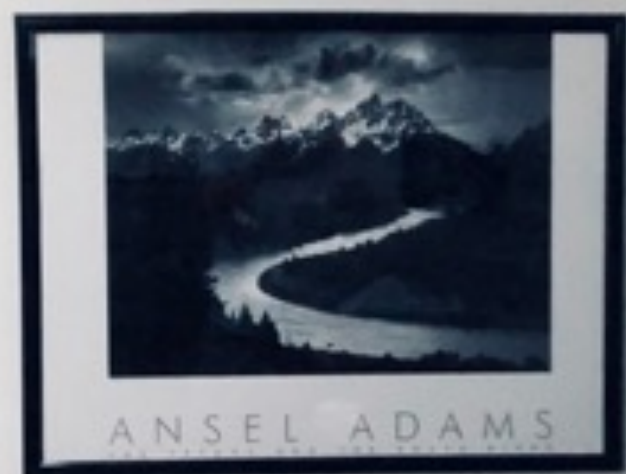


mountains:
calling &
i must go

pictures: faces
places
fam









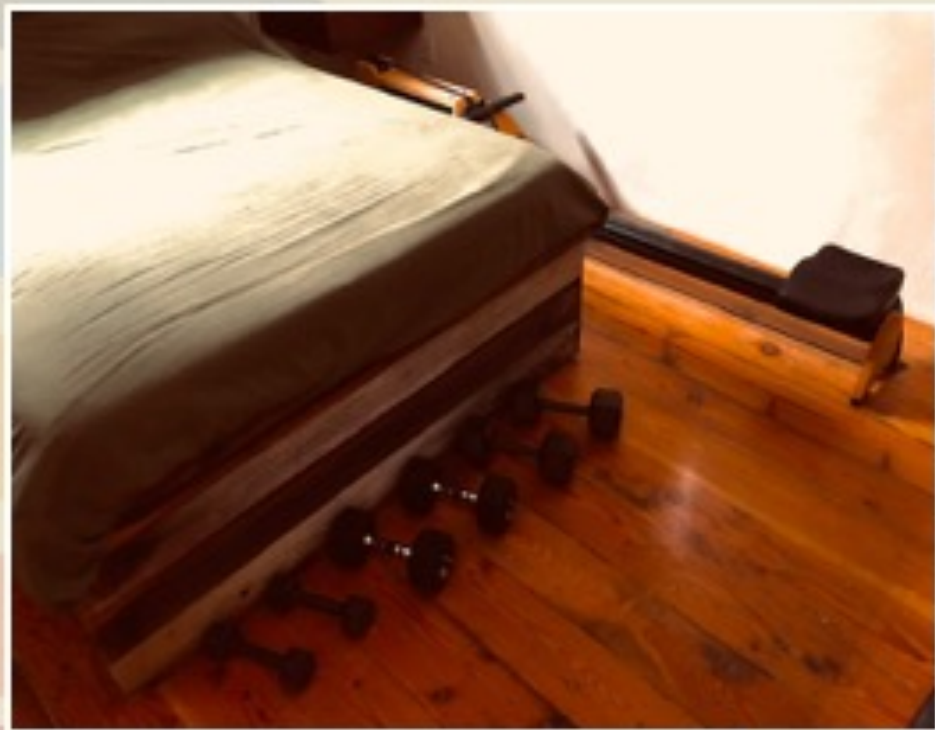
An abstract graphic design featuring a dark brown, textured background. Overlaid on this are several sets of parallel lines in different colors: light green, orange, yellow, and red. These lines enter from the left and bottom edges, curve at 90-degree angles, and extend horizontally across the right side of the image. The text is positioned in the upper right quadrant, to the right of the green and orange line bundles.

**no tv. but
plenty of:**

**reading
music
exercise
building
movement**











21 - 63 mph



1 - 4 mph



5 - 20 mph



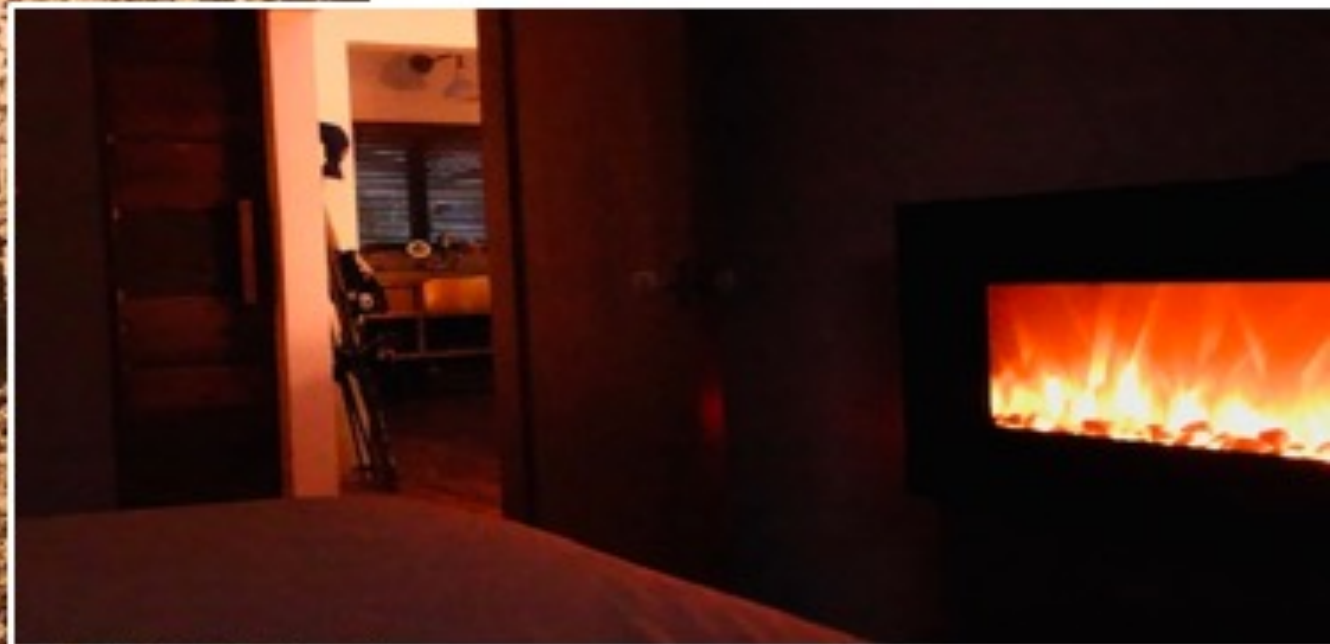
?

An abstract graphic featuring a dark brown, textured background. Overlaid on this are several sets of parallel lines in different colors: light blue, yellow, orange, and light green. These lines enter from the left and top edges, curve at 90-degree angles, and extend horizontally across the frame. The lines are grouped together, with each group consisting of three to five parallel lines. The overall effect is reminiscent of a circuit board or a stylized map of data paths.

at day's end...



..... throw a few
solar electrons on
the led fireplace.



pull the forest curtain closed



Lullaby:

California Stars by Woody Guthrie

<https://www.youtube.com/watch?v=5qqedFPZVbg>